

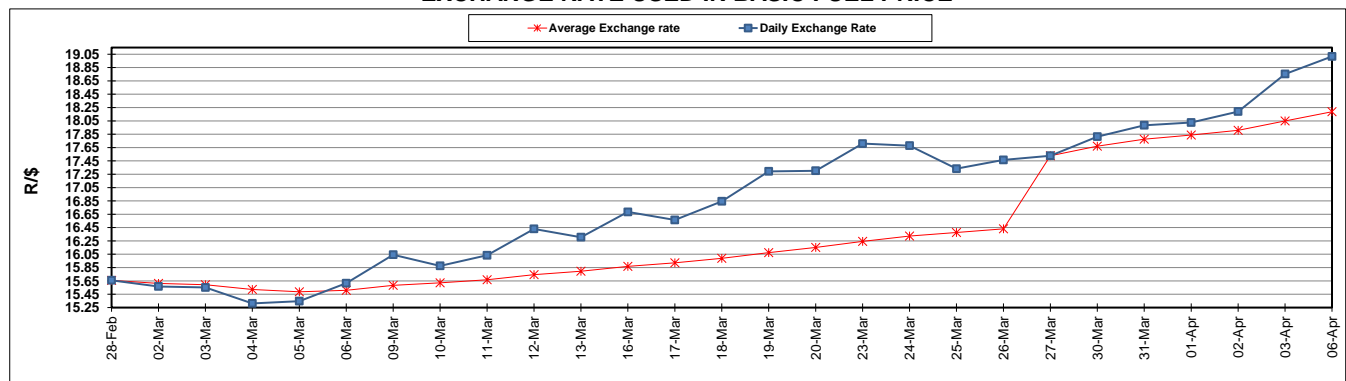
	PETROL 95 ULP	PETROL 93 ULP & LRP	DIESEL 0.05%	DIESEL 0.005%	ILL. PAR.
GAUTENG PUMP PRICE (SA c/l) AS FROM 01/04/2020	1,396.000	1,376.000	-	-	-
WHOLESALE PRICE (SA c/l) AS FROM 01/04/2020	-	-	1,269.560	1,273.960	672.828
SINGLE NATIONAL MAXIMUM RETAIL PRICE	-	-	-	-	840.000
BASIC FUEL PRICE - 06/04/2020 (SA c/l)	347.913	343.979	474.113	484.686	351.995
PRESS RELEASE CONTRIBUTION TO BFP 01/04/2020 - 06/04/2020 (SA c/l)	448.770	438.770	518.630	523.030	468.128
UNIT OVER/(UNDER) RECOVERY - 06/04/2020 (SA c/l)	100.857	94.791	44.517	38.344	116.133
AVERAGE BASIC FUEL PRICE 27/03/2020 - 06/04/2020	314.070	308.689	451.982	458.819	336.322
AVERAGE UNIT OVER/(UNDER) RECOVERY 27/03/2020 - 06/04/2020	228.643	218.881	137.362	135.354	216.663

ANALYSIS MOVEMENT OF AVERAGE OVER/(UNDER) RECOVERY

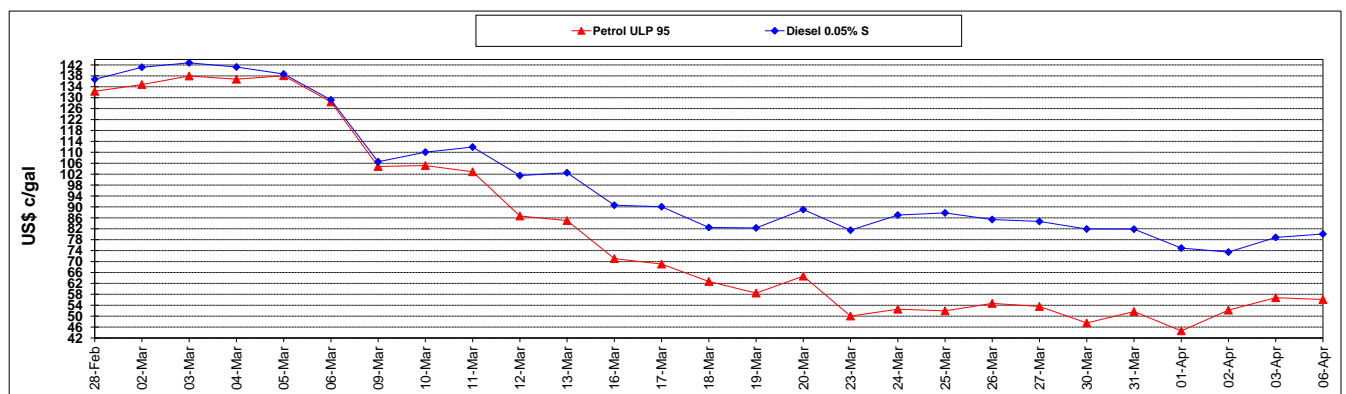
	PETROL 95	PETROL 93	DIESEL 0.05%	DIESEL 0.005%	ILL. PAR.
- MOVEMENT IN INTERNATIONAL PRODUCT PRICES	258.982	248.700	181.023	179.676	249.152
- MOVEMENT IN EXCHANGE RATE	(30.339)	(29.819)	(43.661)	(44.322)	(32.489)
AVERAGE UNIT OVER/(UNDER) RECOVERY 27/03/2020 - 06/04/2020	228.643	218.881	137.362	135.354	216.663

R/\$ EXCHANGE RATE - (R/\$19.0168 - 06/04/2020)

EXCHANGE RATE USED IN BASIC FUEL PRICE



INTERNATIONAL PRODUCT PRICES OF BASKET USED IN BASIC FUEL PRICE



BASIC FUEL PRICE IN SA CENTS PER LITRE

